

# CommandCentral Responder for evidence capture

Collect critical evidence on scene from your mobile device

Cases can evolve in the blink of an eye. Equipping field officers with a simple way to capture evidence while on the scene of an incident is essential to a case's success. CommandCentral Responder is the indispensable mobile companion to CommandCentral Evidence, allowing officers to capture digital evidence in the field with their Android or iOS devices.

## Gather evidence on your mobile device

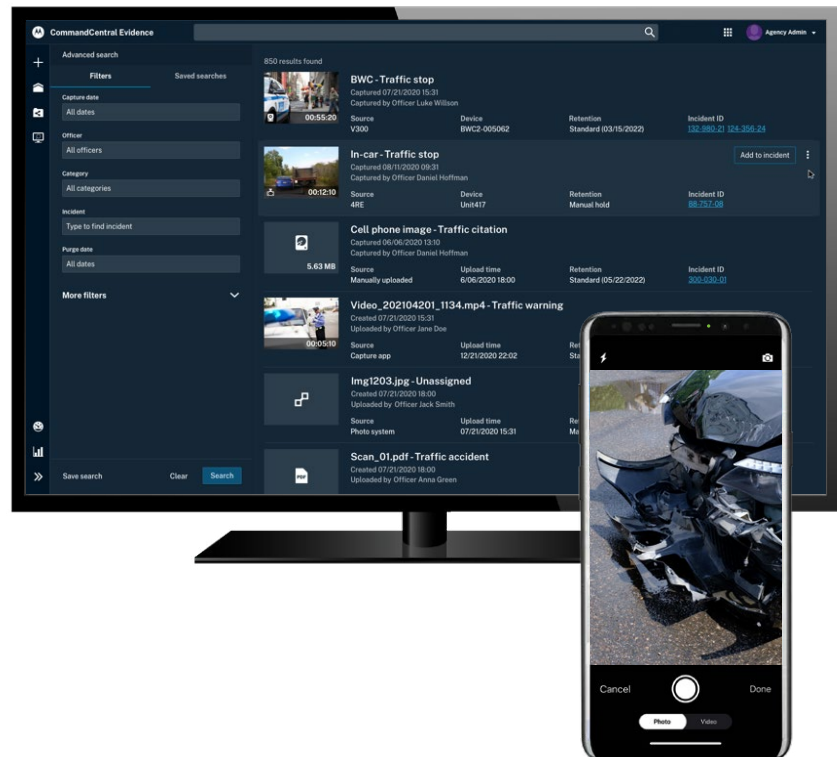
Securely capture high-quality photos, videos, notes and audio files while on scene and automatically add them to the incident report.

## Never compromise on security

All evidentiary data is isolated from personal data, making it inaccessible for tampering or viewing by other apps to ensure a secure flow of data from capture through court.

## Keep officers active in the field

Captured media and associated notes are automatically uploaded to CommandCentral Evidence for immediate access, keeping officers active in the field instead of back at the station.



# Key features

## Capture evidence on scene

Quickly and securely collect photo, video, notes and audio evidence from the scene of an incident with your Android or iOS device. Automatically link to your incident record and add tags for additional context and to ensure accurate documentation.

## Dictate officer narratives

Rather than typing in their vehicles or returning to the station, officers can dictate their narrative with CommandCentral Responder in the field. The recording is automatically transcribed and becomes the primary narrative, saving valuable time and keeping their eyes on their surroundings for added security.

## Easily record field statements

Officers can record witness or victim statements on scene with CommandCentral Responder simplifying the documentation process. Recorded interviews make it easy to reference exact incident details and in some cases, eliminate the need to bring witnesses into the station.

## Make the most of in-field tagging

Use multiple agency-defined tags to make your captured evidence easily searchable and sortable by role, device type, narrative, location, offense or any other tag enabled by your agency.

## Automatically upload media to CommandCentral Evidence

Once captured, your media automatically uploads to CommandCentral Evidence where media files from a variety of sources can be managed, redacted, transcribed and shared – all in one place. Media is removed automatically from your device after a retention period selected by your agency, freeing up storage space.

## Streamline evidence management

CommandCentral Responder groups evidence together as you record or import it and allows users to access recent media from their timeline. Incident records assigned to you are immediately displayed to select and associate any new evidence linked to that record.

## Easily equip all officers

Included with every CommandCentral Evidence deployment, CommandCentral Responder is easy to set up, regardless of agency size. Available for both Android and iOS, the Command Central Responder app simplifies critical field-based evidence capture workflows, whether you use personal or agency-issued devices.

## Part of a robust digital evidence management ecosystem

CommandCentral Responder is one of many digital evidence management tools included with CommandCentral Evidence. Get more out of your digital evidence with the ability to electronically capture, collect, store, manage and share digital evidence while at the scene of an incident. Extend your CommandCentral Evidence user subscription by downloading the free CommandCentral Responder mobile app from the Google Play or Apple App Store.



To learn more, visit: [www.motorolasolutions.com/responder](http://www.motorolasolutions.com/responder)



**MOTOROLA SOLUTIONS**

Motorola Solutions, Inc. 500 West Monroe Street, Chicago, IL 60661 U.S.A.

Available in North America.

MOTOROLA, MOTO, MOTOROLA SOLUTIONS and the Stylized M Logo are trademarks or registered trademarks of Motorola Trademark Holdings, LLC and are used under license. All other trademarks are the property of their respective owners. ©2024 Motorola Solutions, Inc. All rights reserved. 05-2024 [CK05]